

Midlands Engine Claimant Count – September 2024 Release¹

Click [here](#) for the interactive report.

Key Points:

- There were 320,875 claimants aged 16 years and over in the Midlands Engine area in August 2024, an increase of 4,165 claimants since the previous month. This equates to an increase of 1.3% for the Midlands Engine area, while the UK increased by 0.9%.
- Overall, for the Midlands Engine area the number of claimants as percentage of residents aged 16 years and over was 3.8% compared to 3.3% for the UK in August 2024.
- There were 56,980 youth claimants in the Midlands Engine area in August 2024, an increase of 1,640 youth claimants since the previous month. This equates to an increase of 3.0% for the Midlands Engine area, while the UK increased by 2.4%.
- Overall, for the Midlands Engine area the number of youth claimants as percentage of residents aged 16 – 24 years old was 5.0% compared to 4.2% for the UK in August 2024.

In Detail:

Claimants Aged 16 Years and Over

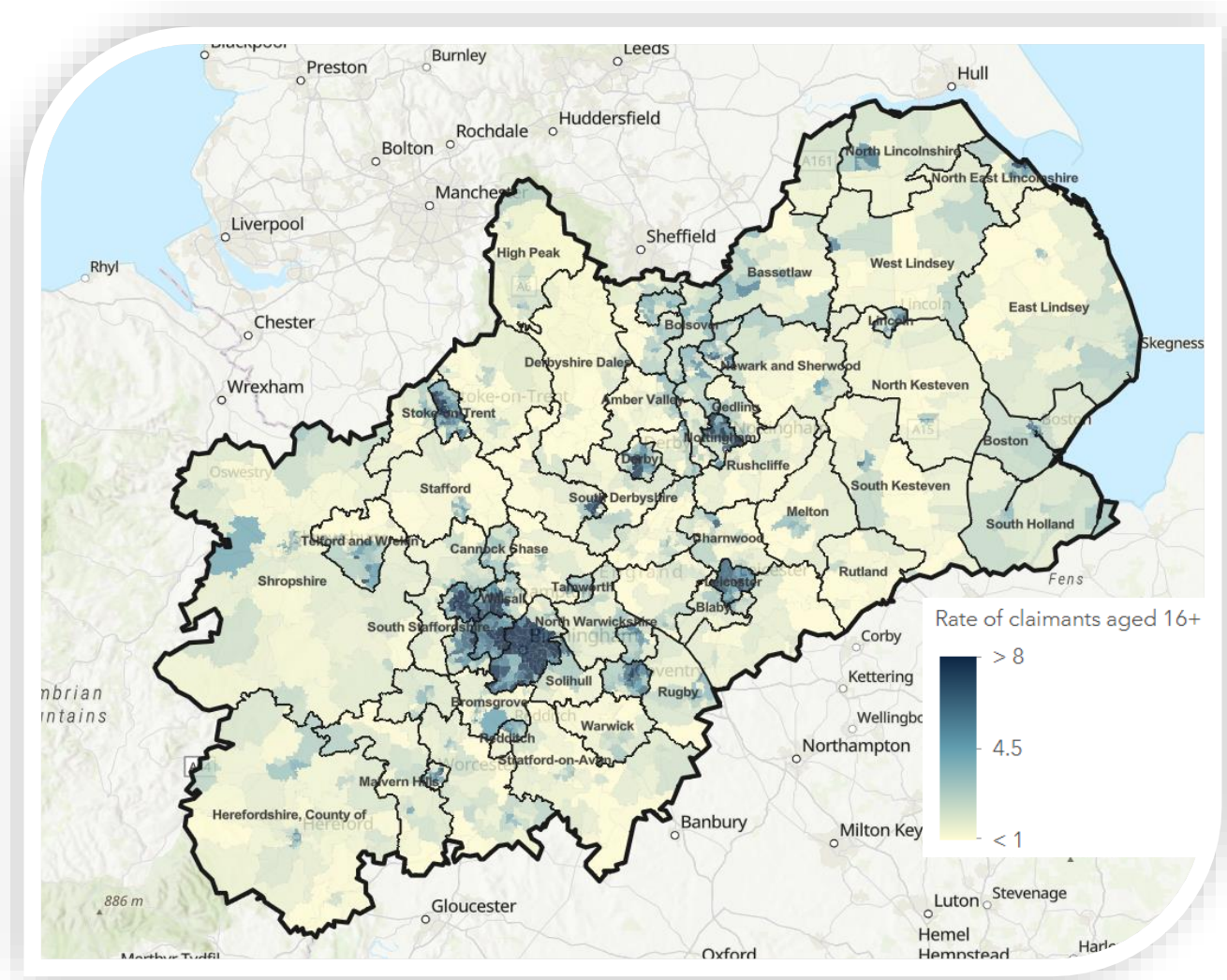
- There were 320,875 claimants aged 16 years and over in the Midlands Engine area in August 2024, an increase of 4,165 claimants since the previous month. This equates to an increase of 1.3% for the Midlands Engine area, while the UK increased by 0.9%. The latest monthly change shows across the Midlands Engine geography that 49 local authorities increased, 2 remained unchanged and 14 decreased.
- Since August 2023, the number of claimants in the Midlands Engine area has increased by 51,485 (+19.1% compared to an increase of 17.3% for the UK). Within the Midlands Engine, all local authorities increased.
- Since March 2020, the number of claimants in the Midlands Engine area has increased by 99,335 (+44.8% compared to +41.4% for the UK). East Lindsey had lower levels of claimants now than in March 2020 (-815).
- Overall, for the Midlands Engine area the number of claimants as percentage of residents aged 16 years and over was 3.8% compared to 3.3% for the UK in August 2024.

Ward Analysis – Claimants Aged 16 Years and Over

- Out of the 1,511 wards within the Midlands Engine, 418 were at or above the UK average of 3.3% for the number of claimants as a percentage of the population aged 16 years and over in August 2024.
- The wards with the highest number of claimants as a percentage of the population were based in Birmingham, with Lozells and Handsworth highest at 20.9% and 19.5% respectively, this was followed by Aston at 19.3%.
- In contrast, the wards with the lowest number of claimants as a percentage of the population were Keele (Newcastle-Under-Lyme) at 0.1%, Ashby Castle (North West Leicestershire) at 0.2% and Horton (Staffordshire Moorlands) at 0.3%.

¹ Source: Office for National Statistics (ONS) based off Department of Work and Pensions (DWP), Claimant Count, released September 2024. Please note, the previous month's figures have been revised. The UK Claimant Count for August 2024 increased on the month and on the year, to 1.792 million. Commencing in May 2024, the DWP are rolling out an increase in the administrative earnings threshold for full work search conditionality. This change is likely to affect around 180,000 claimants over a period of around six months, increasing the Claimant Count over that time.

The following map shows claimants as a percentage of residents aged 16 years and over in August 2024 across the Midlands Engine:



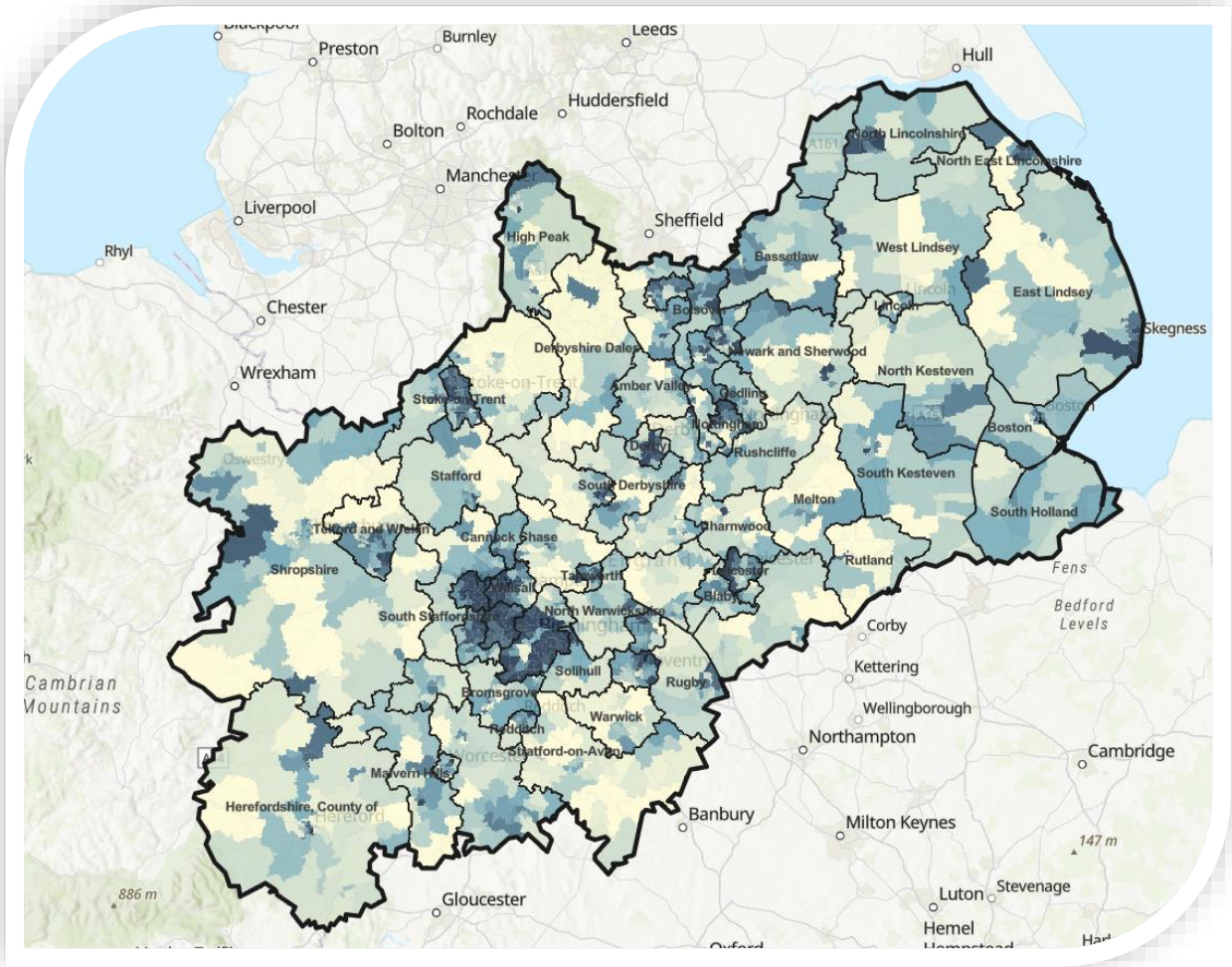
Youth Claimants (Aged 16–24 Years Old)

- There were 56,980 youth claimants in the Midlands Engine area in August 2024, an increase of 1,640 youth claimants since the previous month. This equates to an increase of 3.0% for the Midlands Engine area, while the UK increased by 2.4%. The latest monthly change shows that within the Midlands Engine area, 45 local authorities increased, 12 decreased and 8 unchanged.
- Since August 2023, the number of youth claimants has increased by 5,315 (+10.3% compared to +8.0% for the UK). Within the Midlands Engine, 52 local authorities increased, 8 decreased and 5 unchanged.
- Since March 2020, the number of youth claimants has increased by 12,785 (+28.9% compared to +21.8% for the UK). There were 5 local authorities that were lower than March 2020 levels, 1 unchanged and 59 that were higher.
- Overall, for the Midlands Engine area the number of youth claimants as percentage of residents aged 16 – 24 years old was 5.0% compared to 4.2% for the UK in August 2024.

Ward Analysis – Youth Claimants

- Out of the 1,511 wards within the Midlands Engine, 642 were at or above the UK average of 4.2% for the number of claimants as a percentage of the population aged 16–24 years and over in August 2024.
- The ward with the highest number of youth claimants as a percentage of the population was Handsworth (Birmingham) at 19.0%, followed by Joiner’s Square (Stoke-on-Trent) at 17.1% and Stockland Green (Birmingham) at 15.3%.
- In contrast, within the Midlands Engine there were 81 wards with no youth claimants in August 2024.

The following map shows claimants as a percentage of residents aged 16–24 years old in August 2024 across the Midlands Engine:



Ward claimant rate per population for 16-24

