

## Midlands Engine Claimant Count – August 2024 Release<sup>1</sup>

For an interactive version please click [here](#).

### Key Points:

- There were 321,350 claimants aged 16 years and over in the Midlands Engine area in July 2024, an increase of 27,960 claimants since the previous month. This equates to an increase of 9.5% for the Midlands Engine area, while the UK increased by 9.9%.
- Overall, for the Midlands Engine area the number of claimants as percentage of residents aged 16 years and over was 3.8% compared to 3.3% for the UK in July 2024.
- There were 56,000 youth claimants (16–24 years old) in the Midlands Engine area in July 2024, an increase of 2,475 youth claimants since the previous month. This equates to an increase of 4.6% for the Midlands Engine area, while the UK increased by 4.4%.
- Overall, for the Midlands Engine area the number of youth claimants as percentage of residents aged 16 – 24 years old was 4.9% compared to 4.1% for the UK in July 2024.

### In Detail:

#### Claimants Aged 16 Years and Over

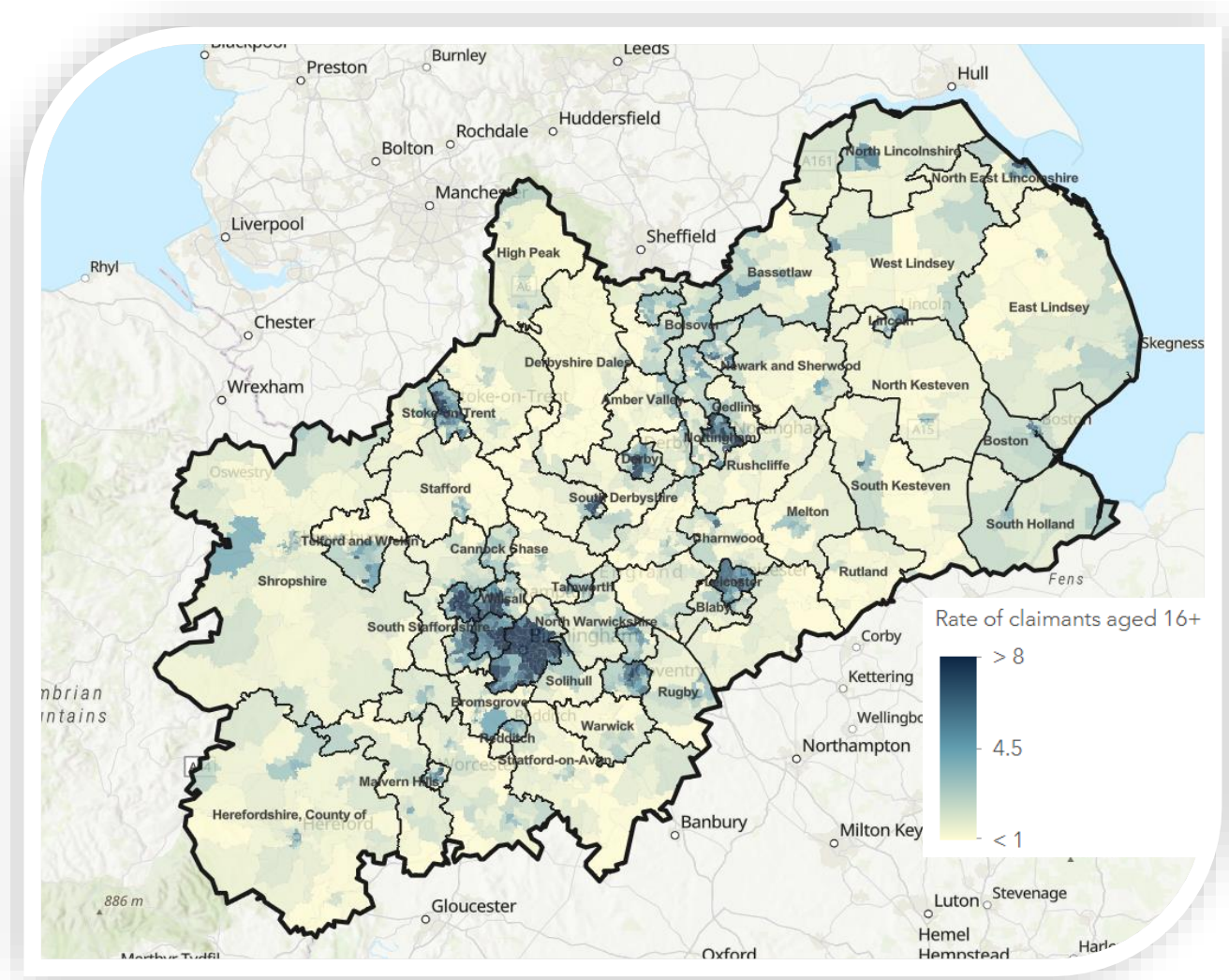
- There were 321,350 claimants aged 16 years and over in the Midlands Engine area in July 2024, an increase of 27,960 claimants since the previous month. This equates to an increase of 9.5% for the Midlands Engine area, while the UK increased by 9.9%. The latest monthly change shows across the Midlands Engine geography that all local authorities increased.
- Since July 2023, the number of claimants in the Midlands Engine area has increased by 48,020 (+17.6% compared to an increase of 16.6% for the UK). Again, within the Midlands Engine, all local authorities increased.
- Since March 2020, the number of claimants in the Midlands Engine area has increased by 99,810 (+45.1% compared to +42.1% for the UK). East Lindsey had lower levels of claimants now than in March 2020 (-770).
- Overall, for the Midlands Engine area the number of claimants as percentage of residents aged 16 years and over was 3.8% compared to 3.3% for the UK in July 2024.

#### Ward Analysis – Claimants Aged 16 Years and Over

- Out of the 1,511 wards within the Midlands Engine, 416 were at or above the UK average of 3.3% for the number of claimants as a percentage of the population aged 16 years and over in July 2024.
- The wards with the highest number of claimants as a percentage of the population were based in Birmingham, with Lozells and Aston highest at 20.9% and 19.5% respectively, this was followed by Handsworth at 19.4%. In contrast, the wards with the lowest number of claimants as a percentage of the population were Keele (Newcastle-Under-Lyme) and Ashby Castle (North West Leicestershire) both at 0.2%.

<sup>1</sup> Office for National Statistics (ONS)/Department for Work and Pensions (DWP): Claimant Count – released August 2024

The following map shows claimants as a percentage of residents aged 16 years and over in July 2024 across the Midlands Engine:



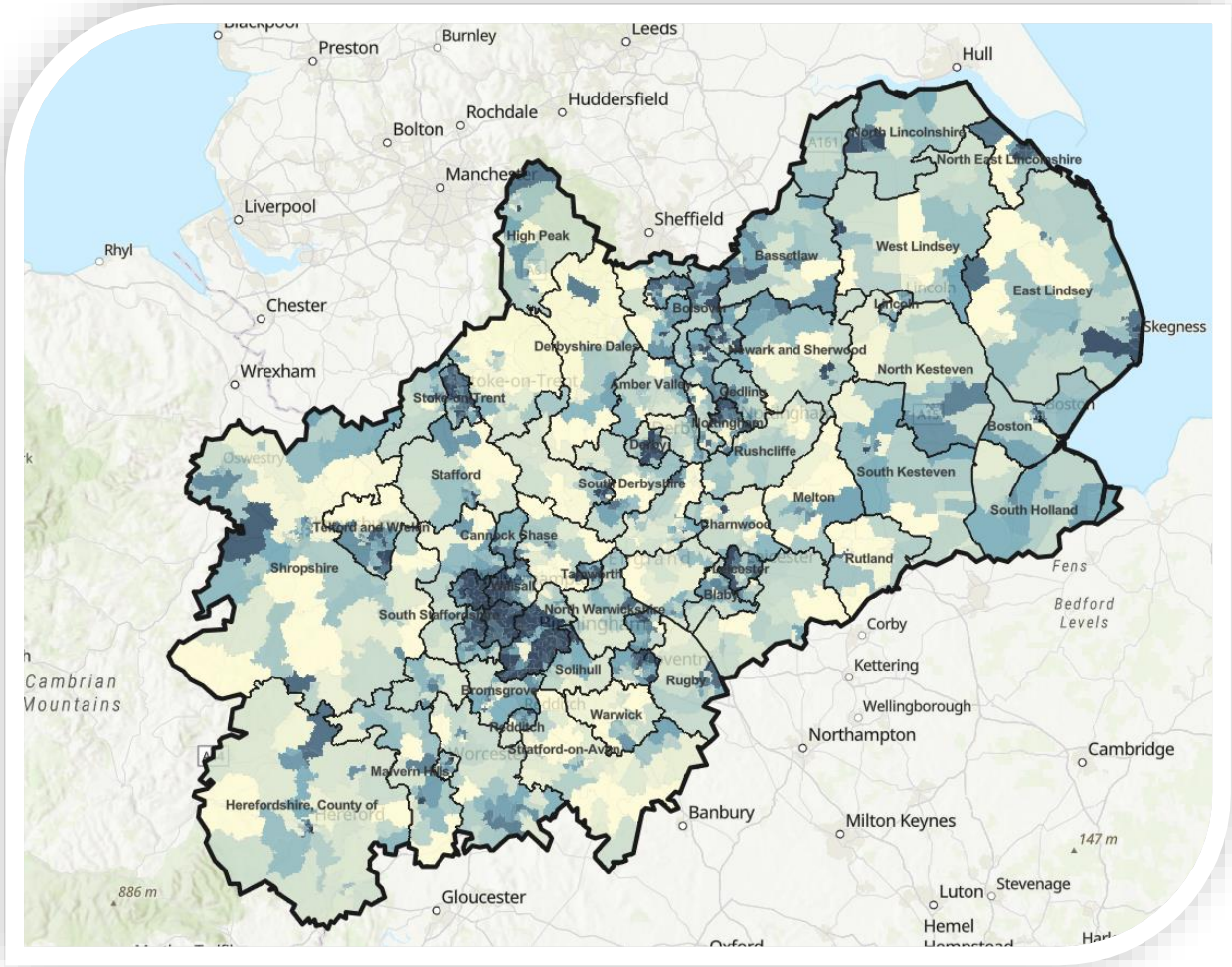
### Youth Claimants (Aged 16–24 Years Old)

- There were 56,000 youth claimants (16–24 years old) in the Midlands Engine area in July 2024, an increase of 2,475 youth claimants since the previous month. This equates to an increase of 4.6% for the Midlands Engine area, while the UK increased by 4.4%. The latest monthly change shows that within the Midlands Engine area, 56 local authorities increased, 5 decreased and 4 unchanged.
- Since July 2023, the number of youth claimants has increased by 4,765 (+9.3% compared to +7.7% for the UK). Within the Midlands Engine, 51 local authorities increased, 12 decreased and 2 unchanged.
- Since March 2020, the number of youth claimants has increased by 11,805 (+26.7% compared to +20.2% for the UK). There were 8 local authorities that were lower than March 2020 levels, 2 unchanged and 55 that were higher.
- Overall, for the Midlands Engine area the number of youth claimants as percentage of residents aged 16 – 24 years old was 4.9% compared to 4.1% for the UK in July 2024.

### Ward Analysis – Youth Claimants

- Out of the 1,511 wards within the Midlands Engine, 632 were at or above the UK average of 4.1% for the number of claimants as a percentage of the population aged 16–24 years and over in July 2024.
- The ward with the highest number of youth claimants as a percentage of the population was Handsworth (Birmingham) at 18.2%, followed by Joiner’s Square (Stoke-on-Trent) at 17.7% and Stockland Green (Birmingham) at 14.9%. In contrast, within the Midlands Engine there were 85 wards with no youth claimants in July 2024.

The following map shows claimants as a percentage of residents aged 16–24 years old in July 2024 across the Midlands Engine:



Ward claimant rate per population for 16-24

