

Midlands Engine Claimant Count – January 2024 Release¹

For an interactive version click [here](#).

Key Points:

- There were 271,385 claimants aged 16 years and over in the Midlands Engine area in December 2023, an increase of 2,985 claimants since the previous month. This equates to an increase of 1.1% for the Midlands Engine area, while the UK increased by 1.4%.
- Overall, for the Midlands Engine area the number of claimants as percentage of residents aged 16 years and over was 3.2% compared to 2.8% for the UK in December 2023.
- There were 52,735 youth claimants (16–24 years old) in the Midlands Engine area in December 2023, an increase of 35 youth claimants since the previous month. This equates to an increase of 0.1% - matching the UK growth rate.
- Overall, for the Midlands Engine area the number of youth claimants as percentage of residents aged 16 – 24 years old was 4.6% compared to 3.9% for the UK in December 2023.

In Detail:

Claimants Aged 16 Years and Over

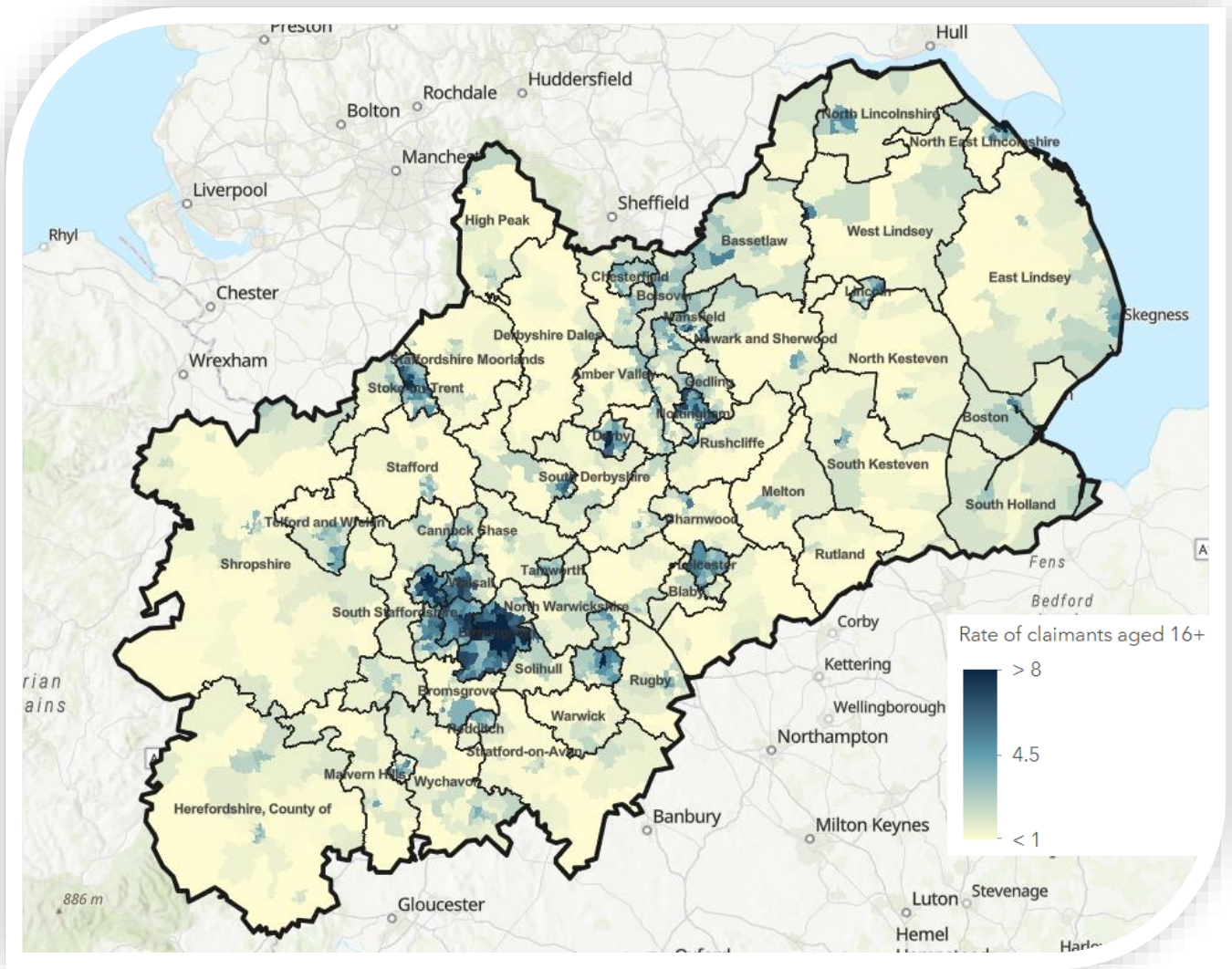
- There were 271,385 claimants aged 16 years and over in the Midlands Engine area in December 2023, an increase of 2,985 claimants since the previous month. This equates to an increase of 1.1% for the Midlands Engine area, while the UK increased by 1.4%.
- The latest monthly change shows that, across the Midlands Engine geography, 18 local authorities decreased, 46 increased and 1 (Bolsover) remained at the same level.
- Since December 2022, the number of claimants in the Midlands Engine area has increased by 6,025 (+2.3% compared to an increase of 2.7% for the UK). Within the Midlands Engine, 36 local authorities increased, 1 remained the same (Charnwood) and 28 decreased.
- Since March 2020, the number of claimants in the Midlands Engine area has increased by 49,845 (+22.5% compared to +22.7% for the UK). East Lindsey, North East Lincolnshire, North Lincolnshire and West Lindsey all have lower levels of claimants now than in March 2020 (-675, -325, -110 and -30 respectively).
- Overall, for the Midlands Engine area the number of claimants as percentage of residents aged 16 years and over was 3.2% compared to 2.8% for the UK in December 2023.

Ward Analysis – Claimants Aged 16 Years and Over

- Out of the 1,511 wards within the Midlands Engine, 455 were at or above the UK average of 2.8% for the number of claimants as a percentage of the population aged 16 years and over in December 2023.
- The wards with the highest number of claimants as a percentage of the population were based in Birmingham, with Lozells the highest at 16.2%. This was followed by Handsworth at 16.1% and then Birchfield at 15.2%.
- In contrast, the lowest proportions were in Keele (Newcastle-Under-Lyme) and Ashby Castle (North West Leicestershire) both at 0.2%.

¹ Office for National Statistics (ONS)/Department for Work and Pensions (DWP): Claimant Count – released January 2024

The following map shows claimants as a percentage of residents aged 16 years and over in December 2023 across the Midlands Engine:



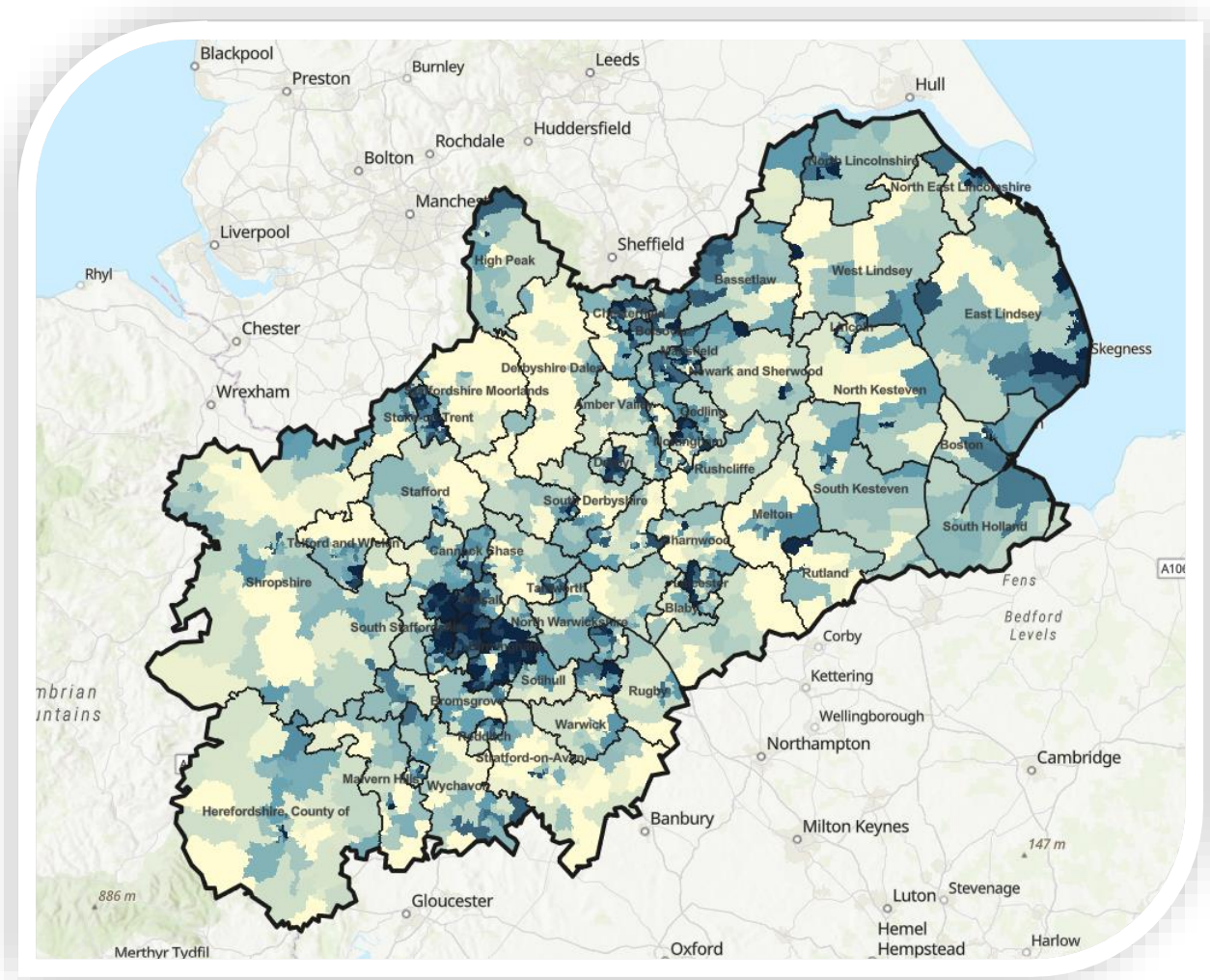
Youth Claimants (Aged 16–24 Years Old)

- There were 52,735 youth claimants (16–24 years old) in the Midlands Engine area in December 2023, an increase of 35 youth claimants since the previous month. This equates to an increase of 0.1% - matching the UK growth rate.
- The latest monthly change shows that within the Midlands Engine, 24 local authorities increased, 28 decreased and 13 remained at the same levels.
- Since December 2022, the number of youth claimants has increased by 4,175 (+8.6% compared to +6.9% for the UK). Within the Midlands Engine, 52 local authorities increased, 11 decreased and 2 remained the same levels (Shropshire and Boston).
- Since March 2020, the number of youth claimants has increased by 8,540 (+19.3% compared to 15.4% for the UK). There were 12 local authorities that were lower than March 2020 levels and a further 2 that were the same level.
- Overall, for the Midlands Engine area the number of youth claimants as percentage of residents aged 16 – 24 years old was 4.6% compared to 3.9% for the UK in December 2023.

Ward Analysis – Youth Claimants

- Out of the 1,511 wards within the Midlands Engine, 638 were at or above the UK average of 3.9% for the number of claimants as a percentage of the population aged 16–24 years and over in December 2023.
- The ward with the highest number of claimants as a percentage of the population was Handsworth (Birmingham) at 17.0%. This was followed by Portland (Mansfield) and Joiner’s Square (Stoke-on-Trent) both at 14.9%.
- In contrast, within the Midlands Engine there were 102 wards with no youth claimants in December 2023.

The following map shows claimants as a percentage of residents aged 16–24 years old in December 2023 across the Midlands Engine:



Ward claimant rate per population for 16-24

