

Midlands Engine Claimant Count – December 2023 Release¹

For an interactive version click [here](#).

Key Points:

- There were 271,655 claimants aged 16 years and over in the Midlands Engine area in November 2023, an increase of 3,290 claimants since the previous month. This equates to an increase of 1.2% for the Midlands Engine area, while the UK increased by 1.9%.
- Overall, for the Midlands Engine area the number of claimants as percentage of residents aged 16 years and over was 3.2% compared to 2.8% for the UK in November 2023.
- There were 53,145 youth claimants (16–24 years old) in the Midlands Engine area in November 2023, an increase of 815 youth claimants since the previous month. This equates to an increase of 1.6% with the UK increasing by 2.2%.
- Overall, for the Midlands Engine area the number of youth claimants as percentage of residents aged 16 – 24 years old was 4.7% compared to 4.0% for the UK in November 2023.

In Detail:

Claimants Aged 16 Years and Over

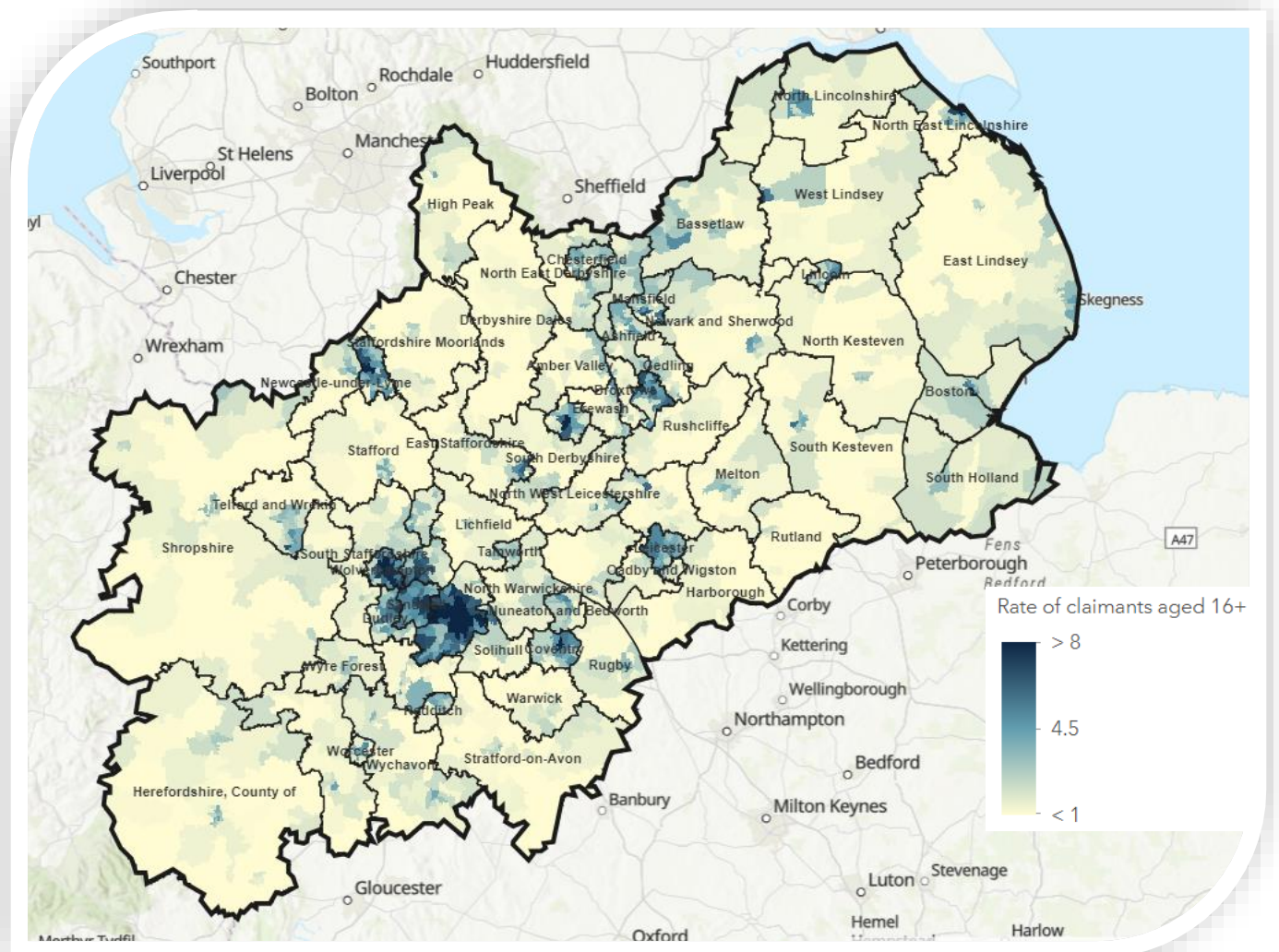
- There were 271,655 claimants aged 16 years and over in the Midlands Engine area in November 2023, an increase of 3,290 claimants since the previous month. This equates to an increase of 1.2% for the Midlands Engine area, while the UK increased by 1.9%.
- The latest monthly change shows that, across the Midlands Engine geography, 15 local authorities decreased, 49 increased and 1 (Ashfield) remained at the same level.
- Since November 2022, the number of claimants in the Midlands Engine area has increased by 8,485 (+3.2% compared to an increase of 3.4% for the UK). Within the Midlands Engine, 43 local authorities increased, 2 remained the same (North East Lincolnshire and Boston) and 20 decreased.
- Since March 2020, the number of claimants in the Midlands Engine area has increased by 50,115 (+22.6% compared to +22.5% for the UK). East Lindsey, North East Lincolnshire, North Lincolnshire and West Lindsey all have lower levels of claimants now than in March 2020 (-870, -335, -130 and -40 respectively).
- Overall, for the Midlands Engine area the number of claimants as percentage of residents aged 16 years and over was 3.2% compared to 2.8% for the UK in November 2023.

Ward Analysis – Claimants Aged 16 Years and Over

- Out of the 1,511 wards within the Midlands Engine, 453 were at or above the UK average of 2.8% for the number of claimants as a percentage of the population aged 16 years and over in November 2023.
- The wards with the highest number of claimants as a percentage of the population were based in Birmingham, with Lozells the highest at 16.2%. This was followed by Handsworth at 16.0% and then Birchfield at 15.0%.
- In contrast, the lowest proportions were in Keele (Newcastle-Under-Lyme) with 0.1%, Ashby Castle (North West Leicestershire) with 0.2% and Dronfield Woodhouse (North East Derbyshire) with 0.3%.

¹ Office for National Statistics (ONS)/Department for Work and Pensions (DWP): Claimant Count – released December 2023

The following map shows claimants as a percentage of residents aged 16 years and over in November 2023 across the Midlands Engine:



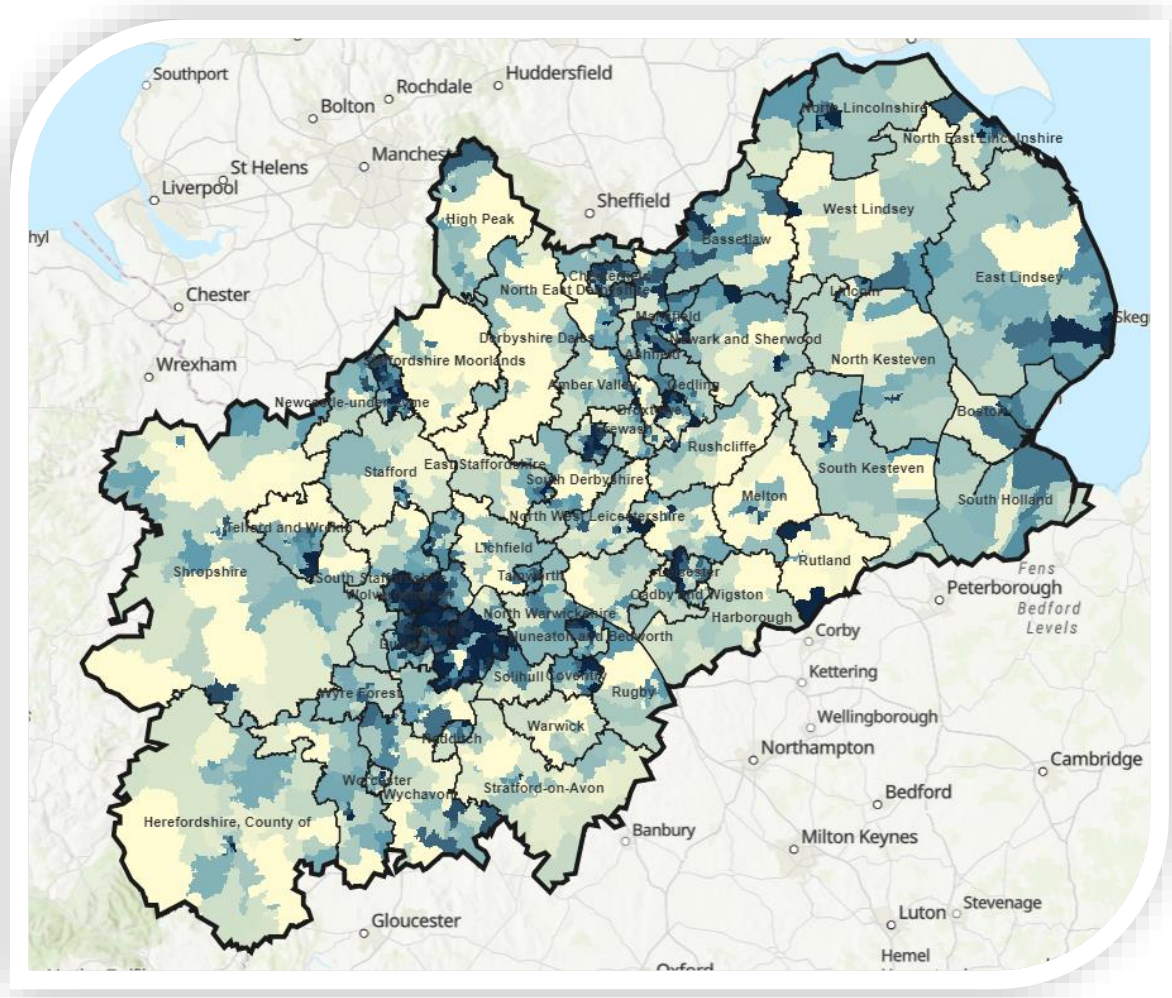
Youth Claimants (Aged 16–24 Years Old)

- There were 53,145 youth claimants (16–24 years old) in the Midlands Engine area in November 2023, an increase of 815 youth claimants since the previous month. This equates to an increase of 1.6% with the UK increasing by 2.2%.
- The latest monthly change shows that within the Midlands Engine, 38 local authorities increased, 14 decreased and 13 remained at the same levels.
- Since November 2022, the number of youth claimants has increased by 4,880 (+10.1% compared to +8.1% for the UK). Within the Midlands Engine, 55 local authorities increased, 8 decreased and 2 remained the same levels (Malvern Hills and Melton).
- Since March 2020, the number of youth claimants has increased by 8,950 (+20.3% compared to +16.3% for the UK). There were 7 local authorities that were lower than March 2020 levels.
- Overall, for the Midlands Engine area the number of youth claimants as percentage of residents aged 16 – 24 years old was 4.7% compared to 4.0% for the UK in November 2023.

Ward Analysis – Youth Claimants

- Out of the 1,511 wards within the Midlands Engine, 617 were at or above the UK average of 4.0% for the number of claimants as a percentage of the population aged 16–24 years and over in November 2023.
- The ward with the highest number of claimants as a percentage of the population was Handsworth (Birmingham) at 16.5%. This was followed by Portland (Mansfield) at 13.8% and Joiner’s Square (Stoke-on-Trent) at 13.8%.
- In contrast, within the Midlands Engine there were 93 wards with no youth claimants in November 2023.

The following map shows claimants as a percentage of residents aged 16–24 years old in November 2023 across the Midlands Engine:



Ward claimant rate per population for 16-24

