



**MIDLANDS
ENGINE**

**MIDLANDS ENGINE
OBSERVATORY
INTELLIGENCE HUB USER GUIDE**

NOVEMBER 2022

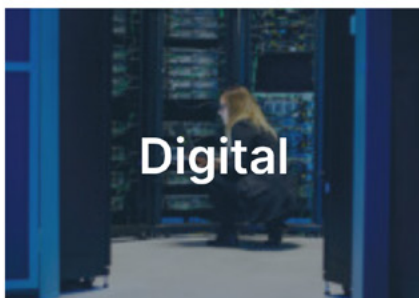
MIDLANDS ENGINE INTELLIGENCE HUB USER GUIDE

The Hub is a repository of content created by the Midlands Engine Observatory and partners. This guide leads you through how to use the Hub's many available features (*please note that not all features are available for every dashboard or sector area, explore the Hub to discover all the tools*).

SELECT AN AREA OF FOCUS

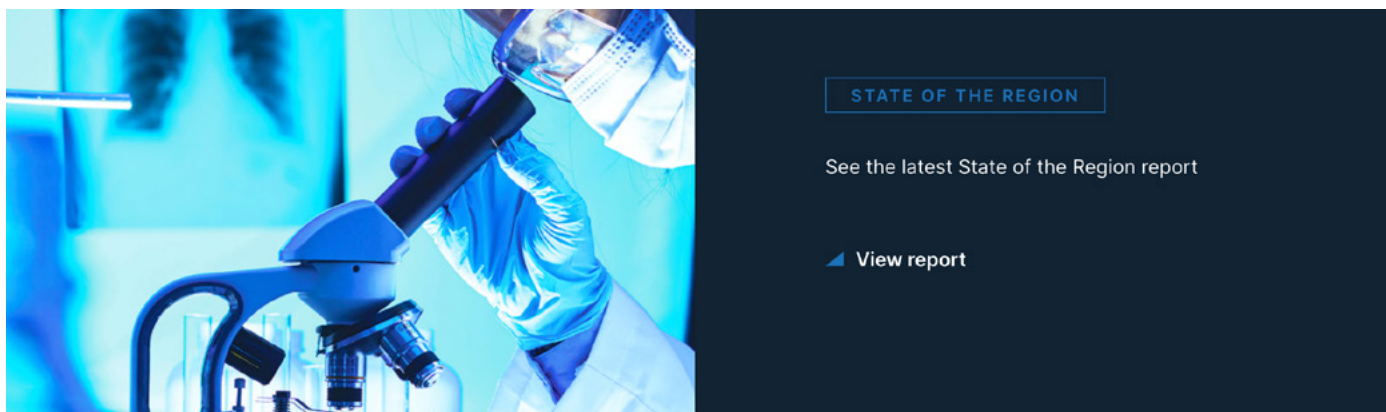
The Hub is structured into **nine Areas of Focus** relating to Midlands Engine priority areas. **Click on the Area of Focus you are interested in** from the grid of images on the **home page** or along the top menu on each page.

Areas of focus



STATE OF THE REGION

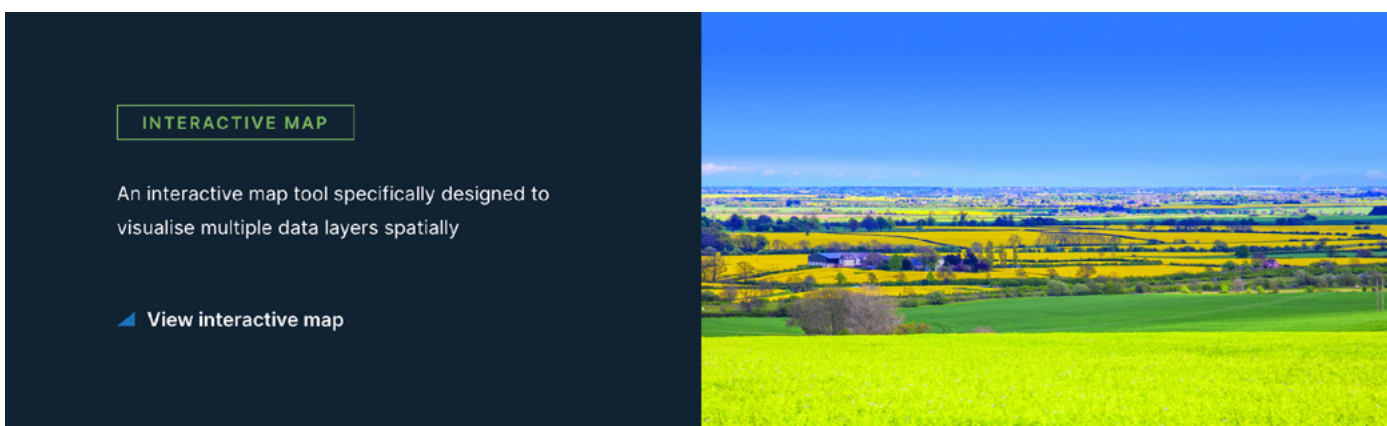
This takes you to the latest **State of the Region** report. The State of the Region is an annual performance report for the Midlands Engine region written by the Midlands Engine Observatory.



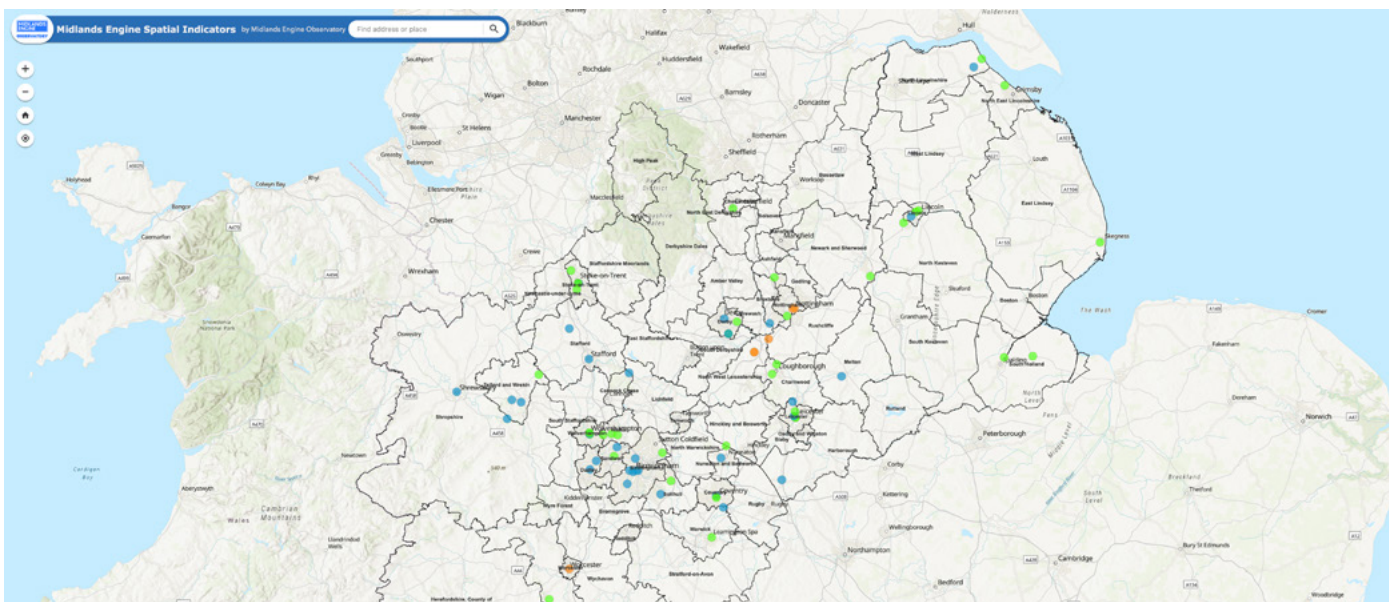
INTERACTIVE MAP

This takes you to the **Midlands Engine Interactive Map (available here)** made with ArcGIS mapping software.

Using spatial indicators (also known as geographic statistics which show data in relation to space, position, area, and size) you can pan in or out of a specific geographic area. You can also choose to see the data across a map of the whole region to compare performance. You can customise the map via a wide selection of layers.

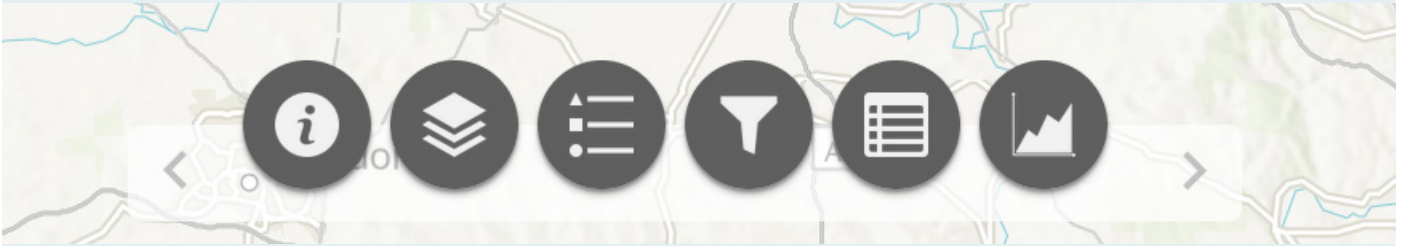


When you click through, the Midlands Engine Interactive Map looks like this:



HOW TO USE THE INTERACTIVE MAP

Click on the icons in the bottom menu to explore the map.



From left to right, the icons click through to:

- **About** box;
- **Layer List** - where you can tick and untick boxes to choose what data you want to display on the map, for example; local authority boundaries, Midlands Investment Portfolio opportunities, jobs, Green Growth projects.
- **Legend** - where you will see the key for each layer you have chosen on the map.
- **Filter** - where you can select from the filters available for the layers you have chosen.
- **Attributes** - where you will see the data table behind the map, these will show either the full data set or geographically specific data dependent on selection.
- **Chart** - where you will see a chart of the data behind the map, the chart will display either the full data set or geographically specific data dependent on selection (*Please note that not all data layers have a chart*).

AREAS OF FOCUS PAGES

Key statistics for each topic are at the top of each Area of Focus page. This is headline data taken from the relevant dashboards and reports. It gives an at-a-glance overview of the topic and is always reflective of the latest data.

Use the '**Jump to**' button to skip to the **Data & Insights section** at the bottom of each page where all the features available in that **Area of Focus** are listed.

[Jump to Green growth tools](#)

DATA & INSIGHTS

The content listed here on each Area of Focus page differs depending on the work that has been done in that area. It may include:

- Live data and Power BI dashboards
- Interactive Mapping
- Intelligence briefings
- Insight pieces from our region's experts
- Our commissioned deep dive research



Explore Green Growth data & insights



CO2 dashboard



Insights



Green Growth Digital map



Energy & Fuel Poverty map

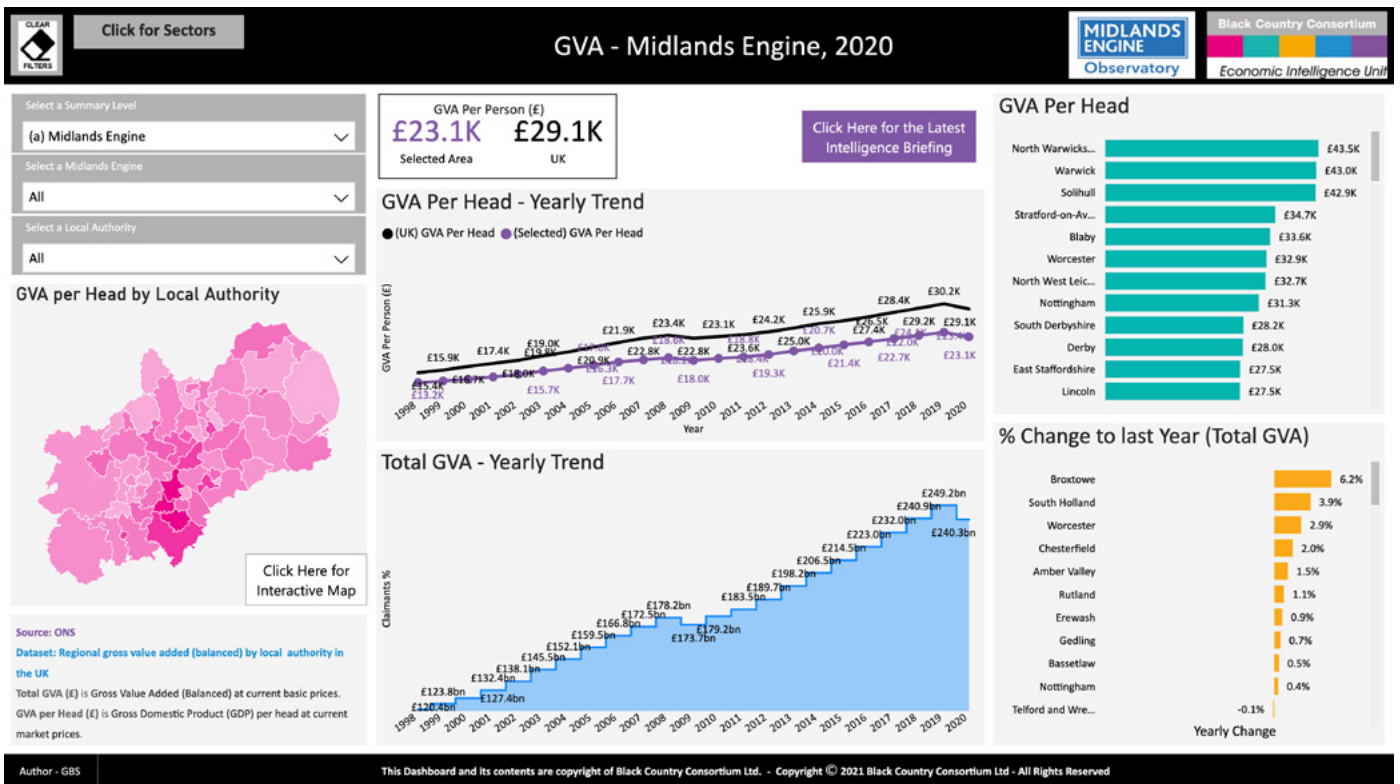


Natural Capital Monitor

DASHBOARDS

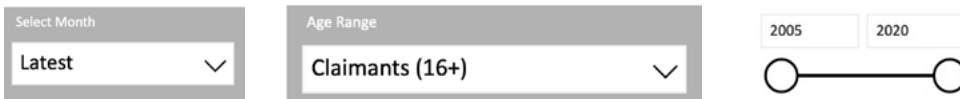
Dashboards show the latest data from our live data warehouse, which means it is always up to date.

The dashboards are all interactive, made with Power BI software, so you can apply filters to find exactly see the data you are looking for.



1. At the top of each dashboard are the headline statistics with comparisons to national benchmarks.
2. On the left, you will find drop-down menus for the filters available for that dashboard. As soon as you select the filter/s, the data in the dashboards will automatically adjust.

The level of geographic granularity available is dependent on the data - most dashboards are broken down by larger geographical areas such as the entire Midlands Engine, Local Enterprise Partnerships, Local Authorities and Wards (wards become available once a Local Authority is selected when available). Other dashboards may have additional filters such as month of publishing, age or gender like in the case of the Claimant Count dashboard, or a year filter like on the CO₂ dashboard.



3. To reset to the default view, press the **'Clear Filters'** button in the top left corner.
4. Some dashboards may have alternative subsets of the data or related dashboards. When available these will be displayed as a button in the top banner, for example; sectors in GVA. In order to return to the main dashboard, **click the 'Home' button** in the top left corner.



5. Some dashboards display pink maps on the left showing high-level data based on filtered selections. Hovering over them shows the latest available data with the more saturated geographies having a higher number of the examined variable. Clicking on a location on the maps will automatically update the main dashboard where available as if using the filters in the top left. *(Please note that this is not available on all maps).*
6. Some dashboards may also have additional buttons to link through to further relevant insights or tools when available. For Example; **'Click Here for the Latest Intelligence Briefing'** or **'Click Here for Interactive Map'**.

REPORTS AND INSIGHTS

You can access reports and insights (short summaries written by the region's leading academics provided by our Research partnership) by the Midlands Engine and our partners in a few ways across the Hub.

The easiest way to find them is to select an **Area of Focus**, scroll down to the bottom of the page and select from the publications listed under '**Latest publications**'. (Please note that *Insights* can also be found as a button alongside dashboards and maps on relevant Area of Focus pages which will lead you to the main library page.)

View our latest publications

The screenshot displays three report thumbnails with the following titles and download buttons:

- International Examples of Levelling Up** (Download report)
- Ethnic Poverty and COVID-19** (Download report)
- COVID and the Reallocation of Spending** (Download report)

At the bottom of the section is a button labeled **View all resources from Midlands Engine**.

You can also click on '**View all resources from Midlands Engine**' to go to the main Midlands Engine library page (**available here**), where you can search all published documents including Regional Economic Monitors, factsheets, briefings and other reports.

When exploring the dashboards, look for buttons linking to relevant reports.

USES

There are multiple potential uses for the information provided on the **Intelligence Hub** which it is hoped will help aid the region's economic growth and recovery.

This includes:

- Building **better business cases** and securing greater investment for the region
- Providing ability to **compare and benchmark** within and across the UK
- Creating and informing **policy recommendations**
- **Supporting the creation of informed responses** by providing a wealth of quick-read insight pieces detailing how recent strategies and policies impact on the region
- **Targeting investment** by showing where there is a need for further investment to tackle a specific need, or showing the impact of past under-investment.

MIDLANDS ENGINE

 www.midlandsengine.org

 info@midlandsengine.org

 @midsengine

 midlands-engine